

The Mannerheim League for Child Welfare



THE MANNERHEIM LEAGUE
FOR CHILD WELFARE



The Mannerheim League for Child Welfare

- A non-governmental organization
- Over 92 000 members, 8400 volunteers
- 566 local associations nationwide
- 13 district organization, 185 employees
- The Central Organization MLL, 75 employees

History

- Founded in 1920
- Founders: General Carl Gustaf Emil Mannerheim, Ms Sophie Mannerheim, Professor Arvo Ylppö
- Patrons: President of Finland Tarja Halonen and her husband Doctor Pentti Arajärvi



The health of children in Finland in 1920-

- Infant mortality high, around 97-106 infants/1000
- Today: 2.7/1000
- Poverty, malnutrition and unhealthy care-giving culture
- Parental education needed
- Created cost-free Maternity and child health clinics providing advice and help for pregnancy, delivery and neonatal care
- Maternity allowance + package of baby clothes, toys, a blanket, information etc.

The aims of the league

- We promote the wellbeing of children, youth and families, increase respect for childhood and parenthood
- We promote that children's views and the needs of children are taken into account in public decision-making.
- We also emphasize the importance of volunteer work and see that joint responsibility increase in society

Finances

Operating expences of the Central Organisation approx. 8,5 ME (2009). Sources of finance:

- Membership fees
- Fundraising campaigns
- Slot Machine Association (Raha-automaattiyhdistys)
- Contributions from other public authorities
- Sponsoring
- Donations

Finnish social and health policy

- Prevention in order to maintain welfare and wellbeing is a key feature of Finnish social and health policy.
- The development of governmental social and health care services is being guided by the Development Programme for Social and Health Care, known as the Kaste programme.

Finnish social and health policy

- (Kaste –programme)The aim is to develop services so that social inclusion increases and exclusion lessens, wellbeing and health increase, and welfare and health gaps diminish

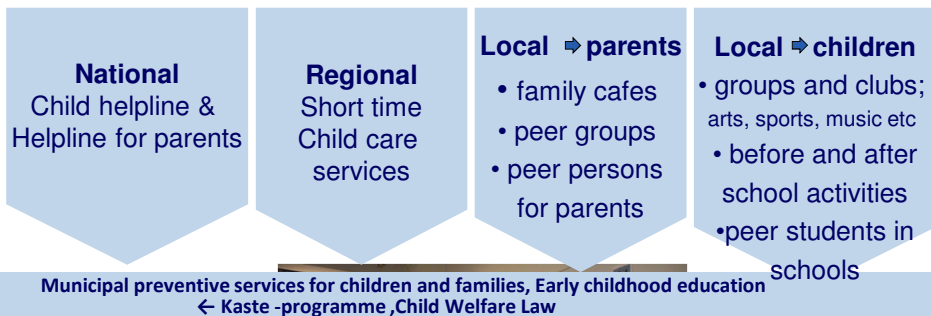
Family centres

- services interlinked across different administrative sectors.
- Family centres in Finland bring together regional family services, such as maternity and child health clinics, early childhood education and care services, school health care and local family services.
- Due to their wide-ranging service network, family services can identify problems affecting children and families at an early stage and give the necessary help.



9

MLL in cooperation with family centres



Activities with families and children



MLL Central organization in Helsinki

- coordinates and develops new activities and training programmes.
- supports local associations and district organizations.

MLL Local associations (566)

- Are mostly based on volunteer work
- Arrange activities for families with children
- Influence local circumstances

Family activities

- Family cafes
- Peer support
- Support persons for parents
- Children's clubs
- Special events for children and families

MLL District Organizations (13)

- offer professional and regional support to local associations.
- organize trainings for volunteers.

Peer support and active citizenship together with families



Peer support – joint experiences and empowerment for families

- Strengthens social networks and local participation
- Promotes active citizenship
- Prevents problems and social exclusion
- Co-operation and partnership with municipal social- and family services

Family cafes

- Over 420 MLL family cafes in Finland
- Open meeting places for families
- Based on MLL Family Cafe -training and supporting programme
- Based on volunteer work and co-operation between families
- Goal is to strengthen wellbeing of families
- Co-operation with municipal services for example local Child Health and Maternity Clinics



15

Peer groups

- Usually group of parents living in the same life situation
- The value of the groups:
 - an opportunity to change experiences
 - feeling of being part of a group
 - getting new friends
 - receiving support to parenthood from other parents
 - Getting advice of everyday matters from other parents



16

Support persons for families with children at home

- Organised by the District Organizations
- Based on volunteer work
- Supports parenthood
- Promotes lifecontrol and empowers everyday life of families



Children's clubs

- Clubs for children (from small children to teenagers)
- Clubs where children and parents go together
- For example art clubs, music clubs, sport clubs



Communal grandparenting

- MLL has developed a model of communal grandparenting
- Action takes place in day care centres, family cafes, librarys etc.
- Aim is to create opportunities for three generation to get acquainted and act together
- Based on volunteer senior citizens activity



Supporting parents

- Short-term child-care services, 125 000 hours yearly
- Support in web: www.mll.fi/vanhempainnetti
- Counselling telephone and Internet-service for parents
- Development of new programs and tools for media education and preventing alcohol abuse among minors
- "A Good Start for Going to School" -campaign aimed at all 60 000 pupils in the 1st grade and their parents every year



20

Working with the youth

- A helpline for children, 116 111
- www.mll.fi/nuortennetti
- Peer students (9th grade) in schools
- School Peace programme
- Mediaeducation



A Helpline for Children and Young People

- Aimed for children and young people under 21 years
- Open daily
- Phone Service 1980
- Internet Service 2002
- At the moment around 200 volunteers
 - Basic course takes 30 hours
- 49 812 contacts during 2009
- <http://www.lastenjanuortennetti.net/>